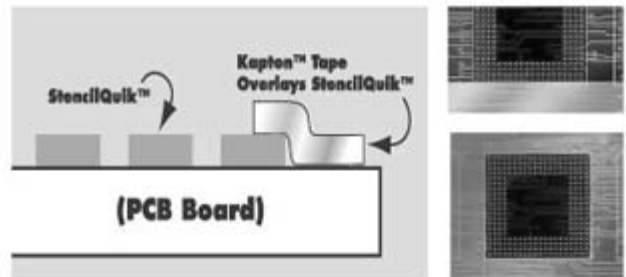


Stencil Quik

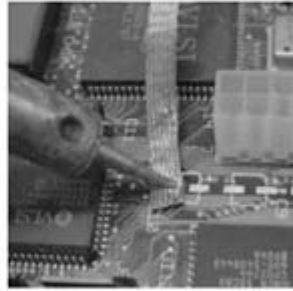
User Instructions



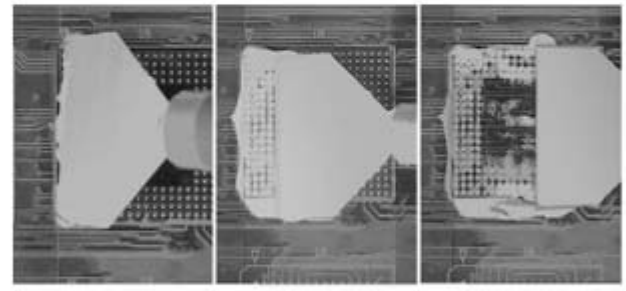
7. Tape off the area around the periphery of the part site with Kapton™ tape. **NOTE:** Ensure that the tape overlaps the outside edge of the StencilQuik™.



1. Remove part.



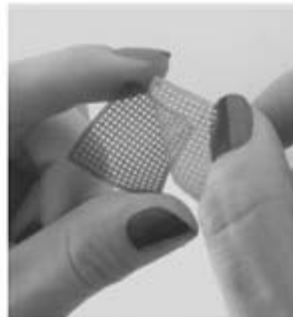
2. Dress site by wicking off residual solder with solder wick or de-soldering tool.



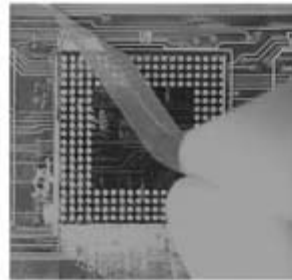
8. Squeegee solder paste across the top of the StencilQuik™ making sure all of the apertures are filled.



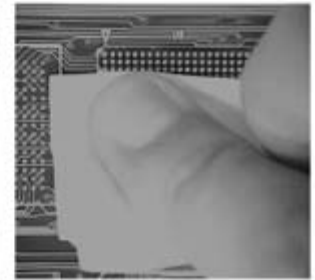
3. Clean site.



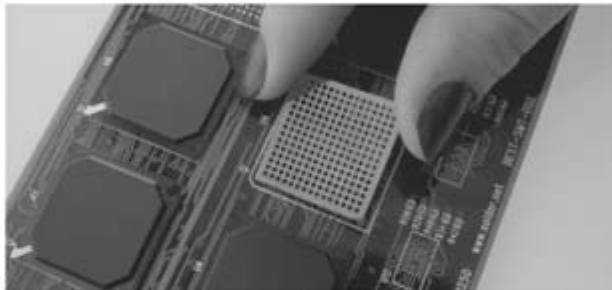
4. Remove release liner from back of SolderQuik™ stencil.



9. Remove the masking tape applied to the periphery of the reworked area applied in step #7.



10. Wipe off the excess solder paste from the top of the StencilQuik™ with a lint-free wipe.



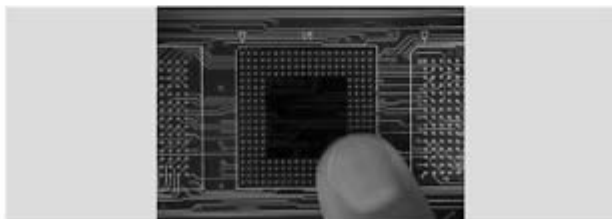
5. Align StencilQuik™ by positioning the diagonally opposite corner apertures over the corresponding pads. **NOTE:** Ensure that the pads are centered in the apertures.



11. Gently place the properly conditioned part aligning the balls or leads of the part with the filled apertures.



12. Reflow the part.



6. Place the StencilQuik™ on the board applying pressure to the stencil to activate the adhesive. **NOTE:** Do not apply pressure until satisfied with alignment.

Stencils Unlimited

4749 Hastings Place - Lake Oswego, OR 97035
please call (503) 699-6529, or email us at
support@stencilsunlimited.com